

[Subscribe](#)[Share ▼](#)[Past Issues](#)[Translat](#)[Whats on, whats happening, and what has happened ...](#)[View this email in your browser](#)

### The Storm ...

The Reserve got off more lightly than some places, and there was less damage than the 1987 Storm, but even so we lost at least three trees, and several paths were blocked by falling branches.

During the Conservation Management Session on the 10th November (10:00, meet at the Reserve Hut), our volunteers will clear the simple stuff, and we welcome anyone to join us who is capable of wielding a bow saw ... or making tea for those who do wield the bow saws. We'll have to get contractors in to clear some of the bigger stuff, like this in the south west corner of the Little Elm Meadow.

With a bit of luck we'll be able to use some of the timber in the new Education Centre

## The Selborne Society Diary,



2 Nov (Saturday) **Field Meeting 1:30 pm at the Reserve** Tom Berry will lead, speaking about our trees.

5 Nov (Tuesday) **Evening meeting: 7.45pm Greenford Community Centre**

[Subscribe](#)[Share ▼](#)[Past Issues](#)[Translat](#)5 Nov (Tuesday) **Evening meeting: 7.45pm Greenford Community Centre**

Wendy [Yorke](#) will talk about the Thames Wilderness Project <http://www.thameswilderness.org.uk/> which spent two years mapping 150 nature reserves and hidden treasures of the Thames, from source to sea. She and her fellow co-author Richard [Mayon-White](#) have shared their findings in a book which

raises money for river restoration projects, through the River Thames Society and Thames River Trust. Their book "Exploring the Thames Wilderness - A Guide to the Natural Thames" will be on sale at a discounted price of £12 only on the evening - perfect for birthday and Christmas presents!

9 Nov (Saturday) **Junior Section, 2.00 pm at the Reserve** Seed heads, leaves, grasses – make some wild animals!10 Nov (Sunday) **Conservation Management at the Reserve. 10.00 am**3 Dec (Tuesday) **Evening meeting: 7.45pm Greenford Community Centre**

Society Vice President Professor David Bender will talk about his recent trip to Ecuador: Amazon and the Galapagos

7 Dec (Saturday) **Field Meeting 1.30 pm at the Reserve;** John [Winget](#) leads us on a winter walk.8 Dec (Sunday) **Conservation Management at the Reserve. 10.00 am**

this course is being run by Strawworks, who are the firm who we are working with on our new Education

Centre. A number of us will be going to the the Hackney City Farm session on the 30th January 2014

## Planning your Straw Bale Build

### Straw Works has developed a new service for self builders.

#### A one day winter seminar to help you plan your build.

Use the shorter, darker days to plan and be ready to build as soon as the weather picks up. This seminar will explain techniques you can use to bring your project in; on quality, on budget and on time.

Specifically we will look at the following 4 tools in the context of strawbale building:

- A critical path analysis (a chronological list of activities to bring your project to fruition)
- A template for recording suppliers & costs
- A work plan with times & dates
- Drawing up a budget

In addition the seminar will cover identifying the stages of a build, permissions needed, questions about design, a list of necessary materials and equipment. The seminar pack comprising: handouts, checklists and a case study will be available to take away and use as a basis for your winter planning.

#### Seminar Dates:

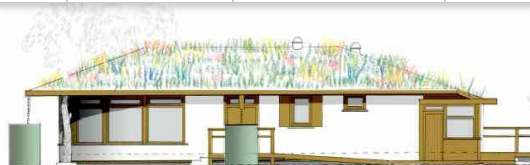
November 23rd - Todmorden, West Yorkshire

January 30th - Hackney City Farm, London

Times: 10:00 to 16:00

Price: £35 per day (includes tea, coffee and biscuits, please bring your own lunch)

Bookings: To place your booking please email Jane at [strawworks@gmail.com](mailto:strawworks@gmail.com)

[Subscribe](#)[Share](#) ▼[Past Issues](#)[Translat](#)

### New Education Centre

We enthusiastically (ok, impatiently!) await news of the Planning Decision - now imminent! no problems are known and the result ought to be out soon. you can visit [this page](#) for up to date information. or our

Blog <http://selbornesociety.wordpress.com/>

which I will update as soon as I hear ANYTHING!

Once that decision is known we 'll be able to confirm our application to Veolia Environmental Trust for a £50,000 grant, and order the bales. Strawworks can be commissioned to do the detailed and technical work, putting in Building Regulation Approvals, and all being well we'll start to gear up for construction to commence in the Spring.

### Hedgehog Course ...

Hedgehogs were recently voted the UKs most popular wild animal. They are also in severe decline but can thrive in our cities with a bit of help. A survey showed that there were still wild hedgehog populations in most London Boroughs in 2006

The People's Trust for Endangered Species, alongside British Hedgehog Preservation Society have produced a



### Westonbirt:

A great time was had by all, despite a mix up over the coach arrival time (for which I was responsible, apologies to all affected). We arrived at Westonbirt just as the sun began to shine, and were quickly whisked away by Lizzie and Thomas, expert volunteer guides from the Friends, for a tour of the Arboretum, telling us about its history, the trees, their importance, and the collection generally. it was fascinating. 4:30 when we were due to depart came all too quickly, but there was sufficient time to have some lunch and explore a bit of the rest of the site; the return journey was uneventful! There was so much to see, a return trip is inevitable! *Some Photos:*

Our next outing will be 19th February 2014, to Slimbridge, 09:15 from Ealing Broadway, 09:30 Perivale Station; pre booking essential ... more information from [www.snipurl.com/ssslimbridge](http://www.snipurl.com/ssslimbridge)

[Subscribe](#)[Share ▼](#)[Past Issues](#)[Translat](#)

one-day training course for the people who control and manage London's open spaces: the managers, contractors, planners and decision-makers that decide how greenspace is used and maintained. This is a great opportunity for you to learn how to bring back a charismatic species and re-engage the public with wildlife on their doorstep.

For more information and to book the event: <http://www.ptes.org/?page=499>

The course will be held on the 6th December in Battersea.

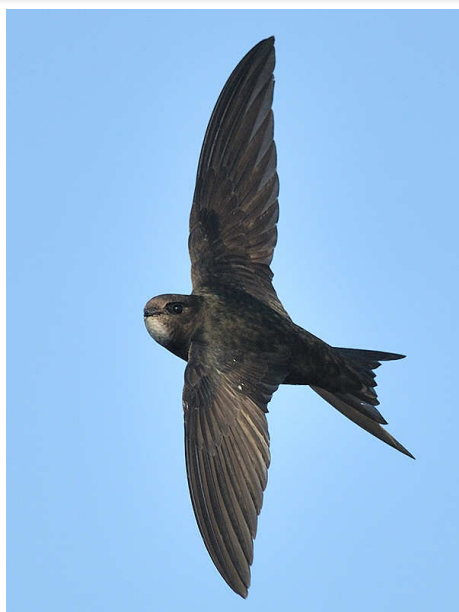
## Redrug Productions

After several false starts, Redrug Productions eventually decided that the Reserve was the best "location" for their production "The Call" and filming went ahead at the end of September. (photos requested)

## Horses:

We've enjoyed having Fire and Laura with us again in the Reserve this year - just the two. A few weeks ago, there was an unfortunate incident where the horses' tails were cut; the horses were not injured, but the owner rightly raised it with us - the horses are not the Society's, they are expertly and well cared for, and must be left alone. Fire and Laura will be leaving us soon for the winter, but we look forward to seeing them again in the spring.



[Subscribe](#)[Share](#) ▼[Past Issues](#)[Translat](#)

### Swifts:

Following Edward Meyer's Talk on Swifts, it has been suggested that we install swift boxes, and even a swift tower at the wood. Boxes can be done fairly quickly - they are simple to construct, and just need to be erected 3 to 5 metres above the ground; even on the tree hide would be possible. A tower would be more complicated and expensive, so we'd be looking for funding, perhaps a grant or local businesses, or a donation. If we were to install a tower in front of the Tree Hide, it would be amazing to watch these wonderful birds.

### TREE HIDE

Funded by the National Lottery, the hide was constructed last month overlooking the Gilbert White Clearing; it gives a great view of the clearing and the canopy around. Finishing touches are yet needed - improvements to the balcony rail, and a secure ladder.

### Forest Schools:

A new initiative at the Reserve, we are piloting a series "Forest School" sessions; if successful, these are likely to become a regular feature. More information [here](#), or email [contact@selbornesociety.org.uk](mailto:contact@selbornesociety.org.uk), and we'll put you in touch with the organisers.


[Subscribe](#)[Share](#) ▼[Past Issues](#)[Translat](#)

Our next coach outing will be to Slimbridge, the Wildlife and Wetland's Trust Centre in Gloucestershire. 19th February 2013; full information from [www.snipurl.com/ssslimbridge](http://www.snipurl.com/ssslimbridge)

Please note that the Coach will leave Ealing Broadway at 9:15 and Perivale at 9:30, not as previously notified. We will have a stop on both the outgoing and return journeys, and we'll aim to leave Westonbirt at 5pm so we get to see the "commentated feed"; we'll be back at about 7:30 to 8 pm.

 Share

 Tweet

 Forward to Friend

 +1

[Facebook](#)

[Website](#)

The Selborne Society Ltd, a Company Limited by Guarantee. Company No. 00149247

Registered Office 36 Ferrymead Gardens Greenford Middlesex UB6 9NF

Registered with the Charity Commissioners: Register Number 267635

*Copyright © 2013 The Selborne Society Ltd, All rights reserved.*

[unsubscribe from this list](#) [update subscription preferences](#)

[Subscribe](#)

[Share ▼](#)

[Past Issues](#)

[Translat](#)

*MailChimp*